

- NOTES**
- Unauthorized alteration or addition to a survey map bearing a licensed land surveyor's seal is a violation of Section 7209 Subdivision 2 of the New York State Education Law.
 - Only boundary survey maps with the surveyor's original seal are true and correct copies of the surveyor's original work and opinion. Other than embossed-seal copies may contain unauthorized and undetectable modifications, deletions, and changes.
 - Reproduction or copying of this document may be a violation of copyright law unless permission of the author and/or copyright holder is obtained.
 - The location of underground improvements or encroachments are not always known and often must be estimated. If any underground improvements or encroachments exist or are shown, the improvements or encroachments are not covered by surveyor's certification. Utility locations shown, if any, are approximate and are for informational purposes only. Before you dig, call 811 or visit the web site www.digafelnynewyork.com.
 - Datum for survey:
Horizontal Datum: NAD 83 NYS EAST ZONE
Vertical Datum: NAVD 88

DATE OF MAP: 4/26/2021

SURVEY MAP SHOWING

MORIAH BUSINESS PARK SUBDIVISION EXPANSION LOTS 9 - 12

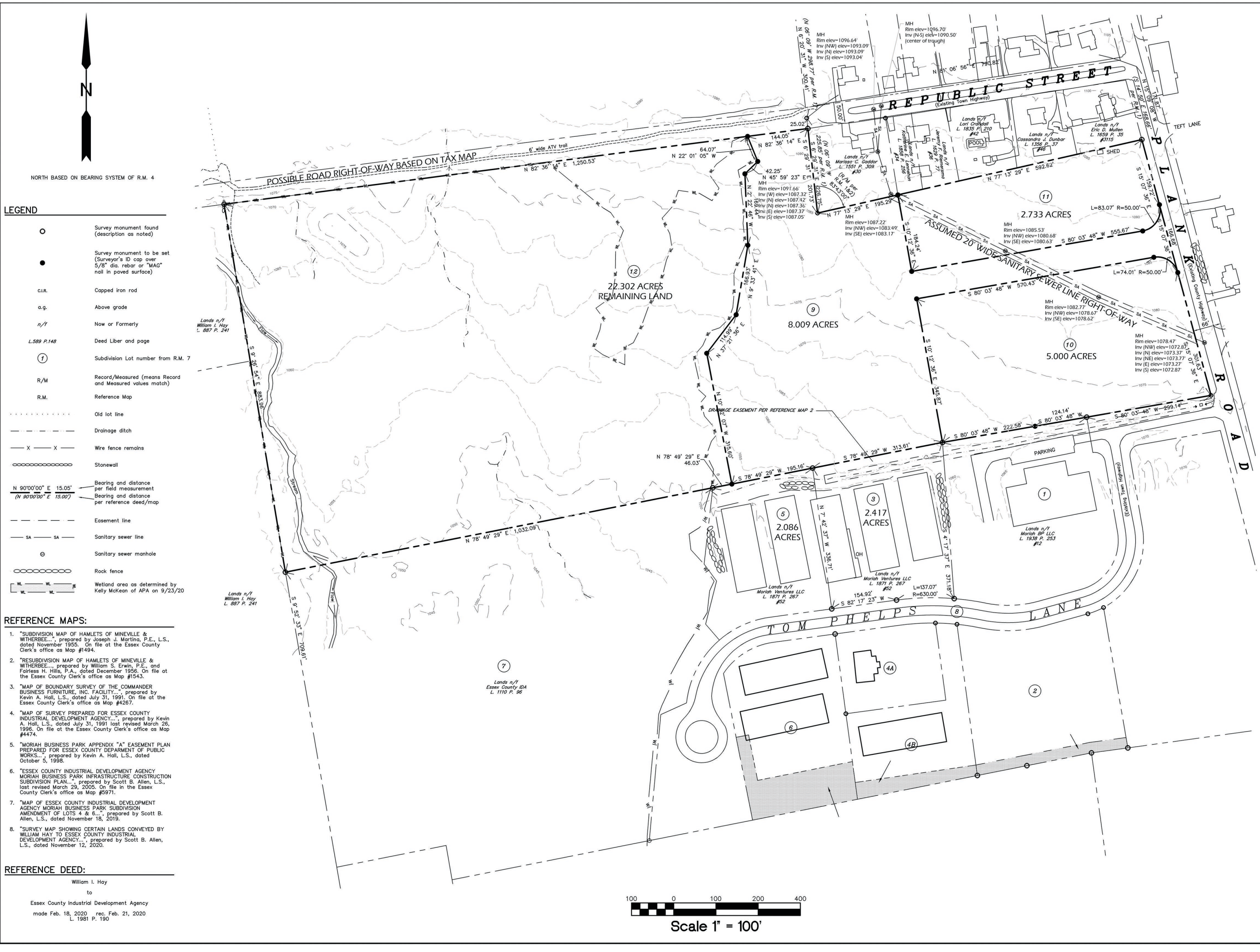
WEST SIDE OF PLANK ROAD
TOWN OF MORIAH
ESSEX COUNTY, NEW YORK

DRAWN BY: BWG

AES Northeast
Architecture, Engineering, and Land Surveying Northeast, PLLC

New York Headquarters: 100 City Hall Plaza, Plattsburgh, NY 12156
New York Branch: 4000 Route 9W, Plattsburgh, NY 12156
Vermont Branch: 127 Allen Brook Lane, Suite 101, Ferrisburgh, VT 05752

SCOTT B. ALLEN, L.S.
LICENSE NO. 49596
JOB NO. 4846



NORTH BASED ON BEARING SYSTEM OF R.M. 4

LEGEND

- Survey monument found (description as noted)
- Survey monument to be set (Surveyor's ID cap over 5/8" dia. rebar or "MAG" nail in paved surface)
- c.i.r. Capped iron rod
- a.g. Above grade
- n/f Now or Formerly
- L.589 P.148 Deed Liber and page
- ① Subdivision Lot number from R.M. 7
- R/M Record/Measured (means Record and Measured values match)
- R.M. Reference Map
- Old lot line
- - - - - Drainage ditch
- X - X - Wire fence remains
- ○ ○ ○ ○ Stone wall
- N 90°00'00" E 15.05' / (N 90°00'00" E 15.00')
- Bearing and distance per field measurement
- Bearing and distance per reference deed/map
- - - - - Easement line
- SA - SA - Sanitary sewer line
- ⊙ Sanitary sewer manhole
- ○ ○ ○ ○ Rock fence
- Wetland area as determined by Kelly McKeon of APA on 9/23/20

REFERENCE MAPS:

- "SUBDIVISION MAP OF HAMLETS OF MINEVILLE & WITHERBEE...", prepared by Joseph J. Martino, P.E., L.S., dated November 1955. On file at the Essex County Clerk's office as Map #1494.
- "RESUBDIVISION MAP OF HAMLETS OF MINEVILLE & WITHERBEE...", prepared by William S. Erwin, P.E., and Fairless H. Hills, P.A., dated December 1956. On file at the Essex County Clerk's office as Map #1543.
- "MAP OF BOUNDARY SURVEY OF THE COMMANDER BUSINESS FURNITURE, INC. FACILITY...", prepared by Kevin A. Hall, L.S., dated July 31, 1991. On file at the Essex County Clerk's office as Map #4267.
- "MAP OF SURVEY PREPARED FOR ESSEX COUNTY INDUSTRIAL DEVELOPMENT AGENCY...", prepared by Kevin A. Hall, L.S., dated July 31, 1991 last revised March 26, 1996. On file at the Essex County Clerk's office as Map #4474.
- "MORIAH BUSINESS PARK APPENDIX 'A' EASEMENT PLAN PREPARED FOR ESSEX COUNTY DEPARTMENT OF PUBLIC WORKS...", prepared by Kevin A. Hall, L.S., dated October 5, 1998.
- "ESSEX COUNTY INDUSTRIAL DEVELOPMENT AGENCY MORIAH BUSINESS PARK INFRASTRUCTURE CONSTRUCTION SUBDIVISION PLAN...", prepared by Scott B. Allen, L.S., last revised March 29, 2005. On file in the Essex County Clerk's office as Map #5971.
- "MAP OF ESSEX COUNTY INDUSTRIAL DEVELOPMENT AGENCY MORIAH BUSINESS PARK SUBDIVISION AMENDMENT OF LOTS 4 & 6...", prepared by Scott B. Allen, L.S., dated November 18, 2019.
- "SURVEY MAP SHOWING CERTAIN LANDS CONVEYED BY WILLIAM HAY TO ESSEX COUNTY INDUSTRIAL DEVELOPMENT AGENCY...", prepared by Scott B. Allen, L.S., dated November 12, 2020.

REFERENCE DEED:

William I. Hay
to
Essex County Industrial Development Agency
made Feb. 18, 2020 rec. Feb. 21, 2020
L. 1981 P. 190

