

For Sale or Lease – Inquire within or call 962-8687 (day), 962-4898 (evening)

8800 square foot manufacturing/commercial/office space

Oil-fired, forced-air heat, wood boiler backup

Distributed 3 phase power and compressed air throughout

Can separate space by floor or use, as appropriate

Lease rates between \$4 and \$6 per square foot, triple net, and depending on need

Highlights of Main Floor

1500 square feet of Office/Finished Space

580 square foot Break Room

2300 square feet of shop/production space

Large handicap-access bathroom

Highlights of Lower Floor

4 office spaces totaling 420 square feet

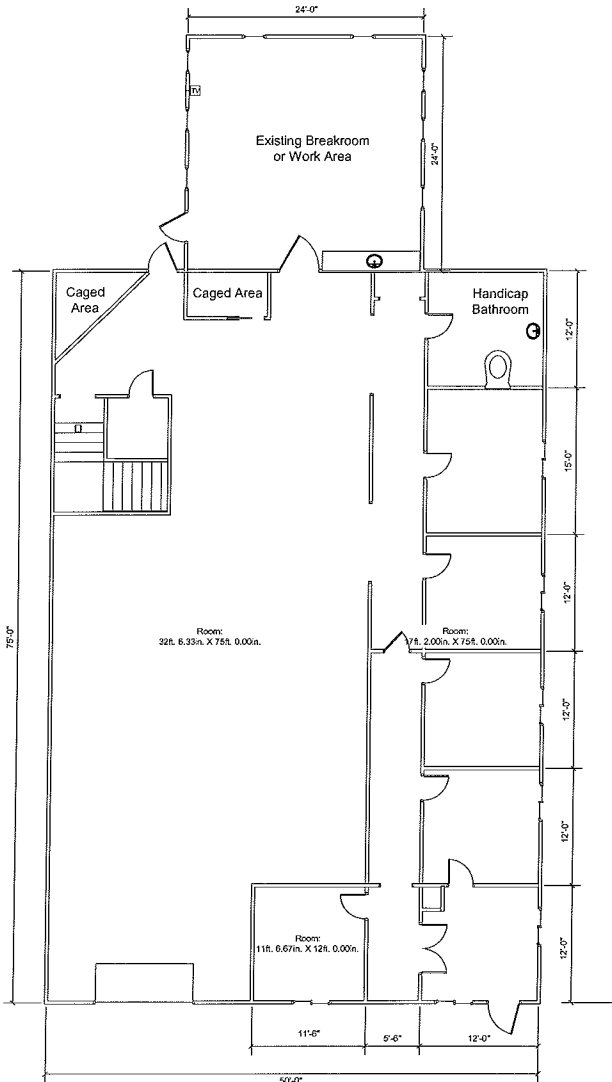
360 square foot finished work space

3000 square feet of shop/production space

580 square foot heated storage space

Large bathroom w/washer & Dryer hookup and shower

6588 Main Street Westport
First Floor Layout



6588 Main Street Westport
Basement Layout

